



Software Installation

ATILA 6.0.0.6 w/ GiD 10.0.9




Dear ATILA User,

To use the Professional Version of ATILA Software, you will need to have a valid license of ATILA and GiD software. If you do not have a current license, please consider ATILA Light for evaluation purposes or contact us at contact@mmech.com for more information on available ATILA Software options.

To install ATILA 6.0.0.6 Professional software for the first time, please follow these simple instructions in the ORDER indicated:

1. **FIRST**, download the three installation files required to install ATILA from <http://www.mmech.com/atila-fem/atila-downloads>, i.e. GiD 10.0.9, ATILA 6.0.0.6 and ATILA Interface Ver. 2.0.2.5.4.

For GiD software, please select Window-x32 or Windows-x64 installation file to match your specific operative system.

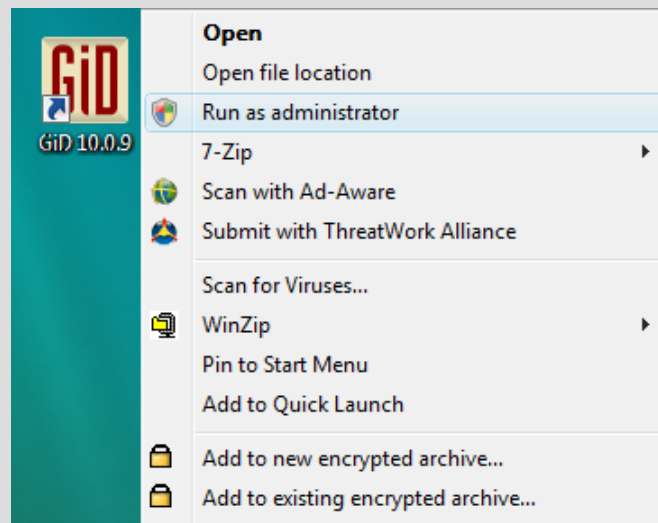
Name	Date modified	Type	Size
 GiD10.0.9-win-x32-Install.exe	2/1/2012 15:01	Application	31,644 KB
 ATILA-6.0.0.6.exe	12/14/2007 16:23	Application	20,500 KB
 ATILA-GID-2.0.2.5.4.exe	8/8/2011 11:40	Application	4,302 KB

2. **Then**, install GiD 10.0.9 software in your computer. GiD will be installed under c:\Program Files\GiD\GiD 10.0.9.
3. **After installing GiD**, install ATILA 6.0.0.6 on your computer.
4. **Finally**, install the ATILA/GiD interface Ver. 2.0.2.5.4.
5. **If you purchased EQI Module**, run the EQI-6.0.4.6.exe program. Otherwise, you do not need to install EQI.

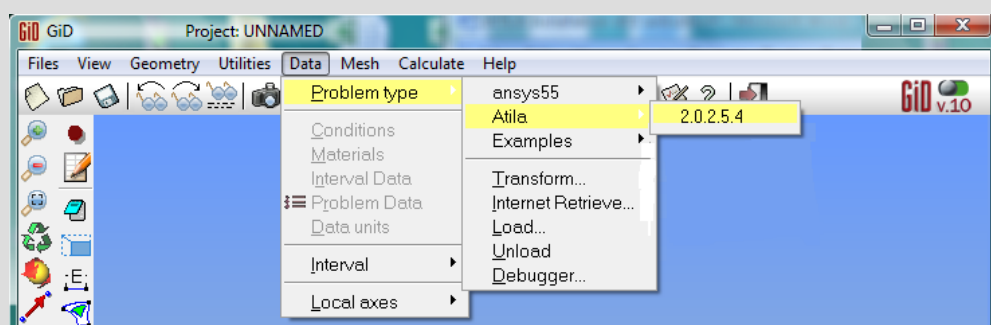
6. FILES MUST BE INSTALLED IN THE CORRECT ORDER FOR THE SOFTWARE TO RUN PROPERLY.

Once the installation is completed, you are ready to start using the software.

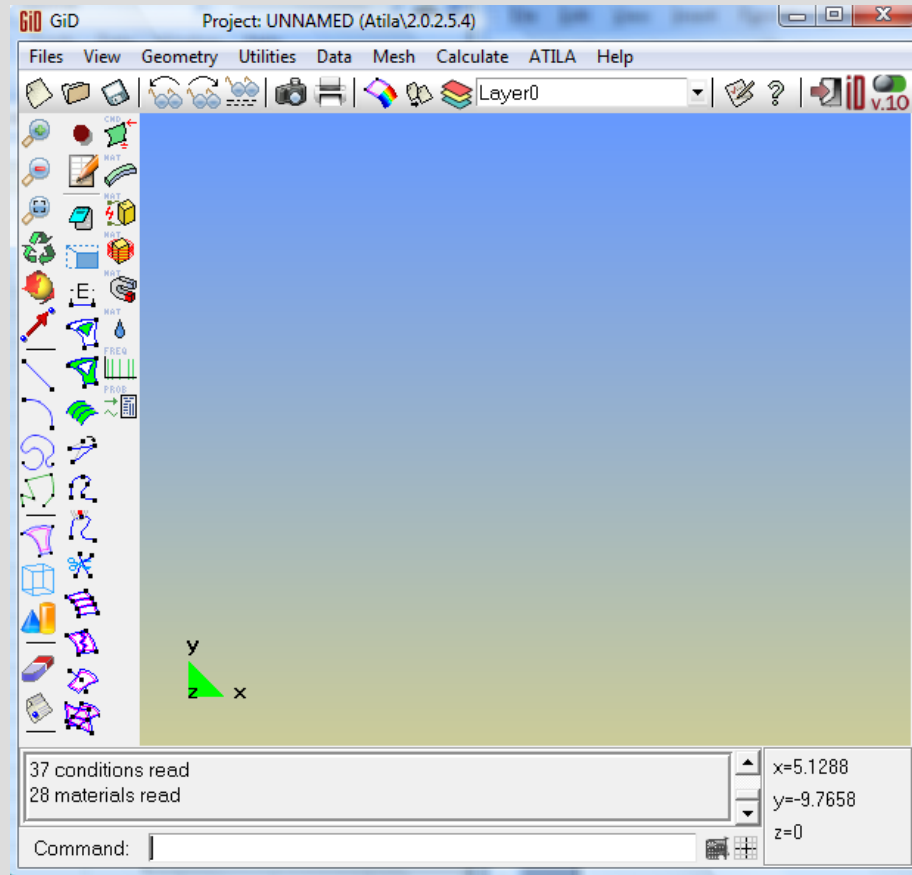
1. Insert ATILA USB key into one of the USB ports on your computer. If you have a USB key license also for GiD, please insert the GiD USB license key in a separate USB port. If your GiD license is local, it will be recognized by the computer.
2. To start working with ATILA, click on the GiD 10.0.9 shortcut icon created in your desktop. This will open the pre/post-processor platform. For Windows Vista users we recommend to use "Run as administrator" to run the software. You can select this option by right clicking on the GiD 10.0.9 icon.



3. Once in GiD, you need to select the Problem Data as ATILA. Go to top menu, select Data → Problem Type → Atila → 2.0.2.5.4.



4. The ATILA platform will be loaded under GiD. ATILA menu is created on the top menu and a new bar will show up in the left icons drop menu.



You may now begin simulating with ATILA 6.0.0.6 version.

Should you have any problem with this program, please do not hesitate to contact Micromechatronics, Inc. at Ph: (814) 861-5688 or by e-mail at contact@mmech.com.

Best Regards,

The Micromechatronics' team